

# DATA SHEET

# ESYLUX

## ALVA BL 700/100 TR 360° 500 830 AN

### Item number

EL10821134

### GTIN

4015120821134



### Technical data

#### GENERAL

Device category	Bollard light
Product information	Intense sunlight over a longer period of time can change the color tone.
Included in delivery	3x screws, 3x wall plugs
Remote controllable	-
Conformity	CE, EAC, RoHS, WEEE
Warranty	5 years

#### ATTACHMENT

Installation type	Free standing
Installation position	Floor
Type of connection	Push terminal
Connectable wire cross section	1.5 – 2.5 mm <sup>2</sup>
Number of contacts	5

#### HOUSING

Dimensions	Height/Depth 700 mm, Ø100 mm
Weight	3210 g
Material	powder-coated aluminium
Protection type	IP65
Permissible ambient temperature	-25 °C...+40 °C
Relative humidity	5 – 95 %, non-condensing
Impact resistance	IK09
Colour	graphite grey, similar to RAL 7024

ON/OFF	110 - 240 V AC	LED 3100 K	CRI 82	Phi 530 lm	75 lm/W	IP65

### Product description

- LED bollard made from high-grade aluminium
- Dirt-repellent thanks to powder coating with lotus effect
- Integrated ballast (on/off), installation without further accessories
- High-quality housing, die-cast aluminium, powder coated anthracite, similar to RAL 7024
- Colour temperature 3000 K

### Offers special product features like:

- Protected against sea air

#### ELECTRICAL VERSION

Control system	ON/OFF
Protection class	I
Nominal voltage	110 – 240 V ~ / 50 – 60 Hz
In-rush current	13 A / 57 µs
Leakage current	0.31 mA

#### LIGHT

Diffuser	transparent
Light emission	direct
Beam angle	160 °
Flicker factor	< 3%
Rated output P	7 W
Luminous flux	530 lm
Luminous efficacy	75 lm/W
Colour temperature	3100 K
Colour rendering index Ra	> 80
Colour tolerance	2 SDCM
Color Quality Scale	80
L70B10 lifetime at 25 °C	105000 h
Life time L70B50 at 25 °C	110000 h
Life time L80B10 at 25 °C	65000 h
Life time L80B50 at 25 °C	70000 h
Life time L90B10 at 25 °C	35000 h
Life time L90B50 at 25 °C	35000 h
Photobiological safety	RG0

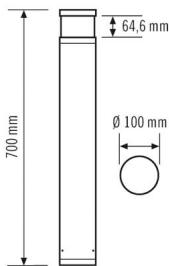
ALVA BL 700/100 TR 360° 500 830 AN

Item number	GTIN
EL10821134	4015120821134

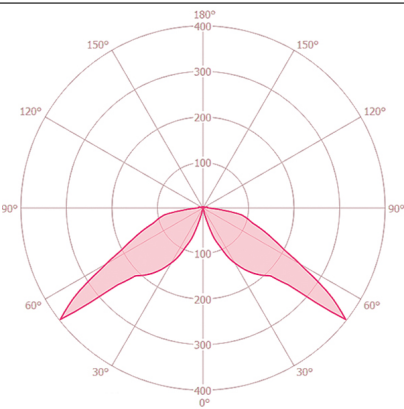
Accessories

Product designation	Item number	Product description	GTIN
<b>Mounting</b>			
ALVA GROUND SPIKE 100	EL10820182	Ground anchor galvanised for installation of bollard lights in concrete foundation or solid ground	4015120820182

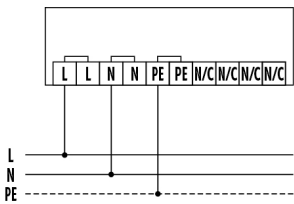
Dimension drawing



Light distribution



Circuit diagram



Standard operation.

Detailed product description

- LED bollard made from high-grade aluminium
- Dirt-repellent thanks to powder coating with lotus effect
- Lamp head: crystal clear with no-glare light emission
- Light emission: 360°
- Integrated ballast (on/off), installation without further accessories
- High-quality housing, die-cast aluminium, powder coated anthracite, similar to RAL 7024
- Installation type: Mounting plate for screwing onto a base, optionally with ground anchor (accessory)
- Colour temperature 3000 K